

# Development

For this development piece, I had a look at the photos and the main issue was that while there were good ones they all had too many subjects in them and the colours were all too similar. The reason I ended up choosing this one was because, firstly, I thought that the perspective was really good especially with the light the bottle was reflecting, secondly the reflection of oranges in the bottom left looked interesting and the light was good too. The main issue was that the stem had too many subjects however as can be seen, I simply cut out and removed certain pieces of fruit. The bowl kept its size which was fine because had it too been coloured then it would have left no dark space for the back, background. I decided that I would not trace the words as to try not get each letter perfect would be to hand given a new spacing it up. The fact the bottle was green helped add contrast to the bottles and fruit (minus the bowl) however I regret choosing a lemon and an orange as the colours are very similar and though it meant that the lemons and orange shapes were good the green was too basic especially considering it takes up that much space on the piece. When tracing the bottle on the paper I included all of the details but when it came to applying it to the paper there were too many lines for the large spaces so I got the most visible reflection of oranges and the chair to do the rest by eye.



For painting I started with the core of the bowl then do what I'd like for as the seeds.

Using a dry brush to add some rough colour around the edges for detail.

Shadows take inspiration from the bowl's shape and use a mix of purple, blue, and white.

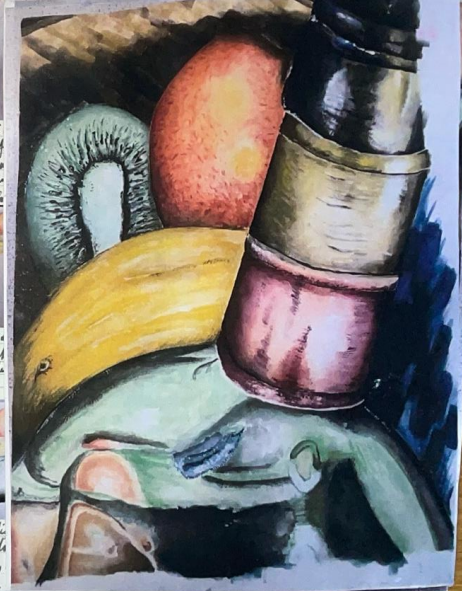
In an attempt to show shadow and colour with a mix of blue and white.

I started on the bowl's rim and the light on the glass.

I began my work on the reflections for the oranges being the colour and tone.

I continued work on the bowl for the light on the glass.

After finishing the bowl I began on the glass trying to get the light across.



# Development

For this development piece, I had a look at the photos and the main issue was that while there were good ones they all had too many subjects in them and the colours were all too similar. The reason I ended up choosing this one was because, firstly, I thought that the perspective was really good especially with the light the bottle was reflecting, secondly the reflection of oranges in the bottom left looked interesting and the light was good too. The main issue was that the stem had too many subjects however as can be seen, I simply cut out and removed certain pieces of fruit. The bowl kept its size which was fine because had it too been coloured then it would have left no dark space for the back, background. I decided that I would not trace the words as to try not get each letter perfect would be to hand given a new spacing it up. The fact the bottle was green helped add contrast to the bottles and fruit (minus the bowl) however I regret choosing a lemon and an orange as the colours are very similar and though it meant that the lemons and orange shapes were good the green was too basic especially considering it takes up that much space on the piece. When tracing the bottle on the paper I included all of the details but when it came to applying it to the paper there were too many lines for the large spaces so I got the most visible reflection of oranges and the chair to do the rest by eye.



For painting I started with the core of the bowl then do what I'd like for as the seeds.

Using a dry brush to add some rough colour around the edges for detail.

Shadows take inspiration from the bowl's shape and use a mix of purple, blue, and white.

In an attempt to show shadow and colour with a mix of blue and white.

I started on the bowl's rim and the light on the glass.

I began my work on the reflections for the oranges being the colour and tone.

I continued work on the bowl for the light on the glass.

After finishing the bowl I began on the glass trying to get the light across.

Here I darkened the bottle, the sides became near black and the overall piece became more vibrant. I tried to add the white with the gold. I used a dry brush to add in smaller black and purple marks in the darker areas. At the top I also tried to blend the light into the black using some detail.

I decided that I wasn't going to leave the lemon because it was missing it in my eyes. Using white acrylic I went over with the darkest parts trying to cover them up. After doing this I used a bright yellow to go over the other things. I think this highly improved the colours and worked.

Quite recently the background went through a significant change. Using a wet brush I painted with purple blue and black to really darken it and bring the bottle forward. I left some texture but for the most part the previous background was gone.

My focus has been on the improvement of the bowl and oranges. I really darkened the orange's edge and though it can't be seen here I added some lighter marks for texture as I did with the bowl. I also added some darkness to the lemon.

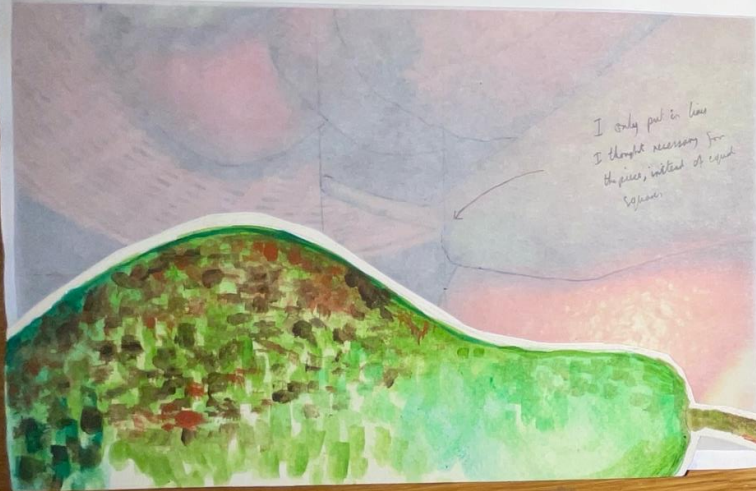
Here I made the green changes as I did behind the bottle but to the bowl. The bowl was slightly smaller as it was a local bowl. I used a yellow white and some blue to create the shadow of the orange and bowl. This will all the improvements listed above the piece looked much better. The key thing that changed was obviously the blue colour forward. My main issue, being the lemon, looks much better than it did before.







# Development



I only put in less  
I thought necessary for  
the piece, instead of equal  
square.

I  
decided that  
I wasn't happy  
enough with  
the piece so  
I use it for the  
black sheet.



The above image is a close  
up of pear. The low green the  
black creates a good effect. First part I drew.

With you can see a close up of the jug which  
has many colors all together for more texture.  
There is also the basket which is placed in the  
case it is a lot of work but has black  
like the back of the stool and (and also work  
like some kind of lattice pattern).

Strong about  
colors slowly leaving  
lighter on the opposite  
the opposite to show  
and accentuate the  
light.



To start with the  
part I painted  
looked more like a pear  
(more like the pear  
apple a red version of  
apple) and I was  
not happy at all.

Shades for the second  
apple to show as people  
with a black surface which is  
very different to the first  
apple.

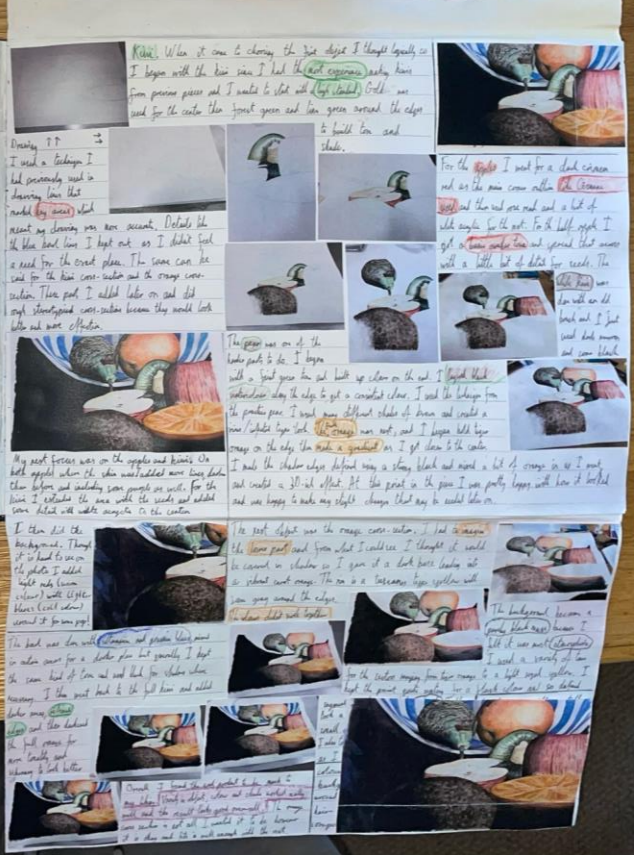
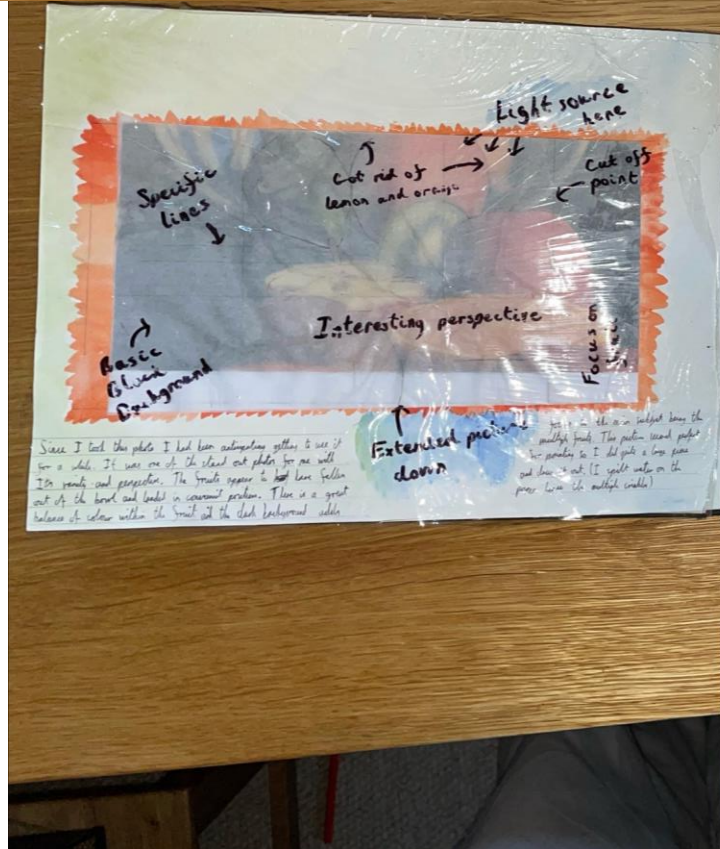
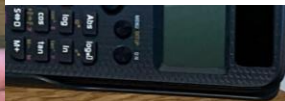


The pear I think  
looks really good, especially  
as the main color paint and  
attracts a draw to it.



While the time  
does the colors  
change to the p  
that draws at







# Triptych's

For my next piece, I'm doing a triptych. Triptych's are a form of art where the piece is divided into three sections. This makes it a type of polyptych, a term for multi-panel works. The middle piece is usually larger than the two sides but they can be equally sized. Traditionally it was done on carved panels that could be folded shut. Triptych can mean anything with 3 parts.

The form can be first seen in early Christian art and in altar paintings like the ones to the right. During the Byzantine period triptychs were often used for private devotional use in regards to prayer. The way certain pieces could be folded allowed ease of transport making it ideal for travellers.

In November of 2012 the highest price ever paid for a piece of artwork was \$142.4 million for a 1969 triptych called 'Three Studies of Lucian Freud' by Francis Bacon. This record was broken in May 2015.



↑ The Black Triptychs ↑



I started with the left, just like Bacon did and began with the cloth. I tried to do the same as I did for the last pieces backgrounds starting with black.

I made the lemon slightly bigger and gave it a first coat. I then tried to do a similar orange but it does seem slightly strange.

I tried to create a fold in the cloth like that would naturally occur and it seemed to work quite well here.

I used a wet on wet technique for the background. The cloth in the corner looks out of place but was necessary to make it fit.



The right side of the cloth needed to be dark - especially in the neck clean line.

The main colors used were - prussian blue, crimson red, lillip and byzantine. I tried to note the orange as closely as possible.

↑ previous piece as reference

Getting the correct colour was hard.

Now I outlined the apple well and started on the 2nd 'man'. I decided that it should go from blue to purple to red.

I left certain areas empty for highlights that when seen create interesting areas. This just occurred to when the light would have been on I had no reference.

I completed the pear in the same style as before and I did a background that would contrast the cloth being yellow and green.

For the triptych that I intended to do I decided it would be best to expand on my previous piece and in doing so I became 3. My issue was that I didn't have very many photos, but I had taken a picture of one all I had so I needed to use imagination. On the left side, the grapes had a very dark color it made sense to use a similar color.

in his second left on the cloth well too have

to show the cloth and to be by the 1st scene. I was influenced in this so I had to expand this around the lemon and the pear. In the left one I used a similar color to the cloth.

Expanding it also meant I would have to expand to include the background for the new I adapted it slightly to make it more suited for water colour. It's having an exact reference challenge on but for the part it looks very good.

this was a smaller version of what I planned to do when it came to the right section. I remembered the design for the pear I had used but this time from a different perspective as can be seen



